

From the Sugar tree
Down Juniata

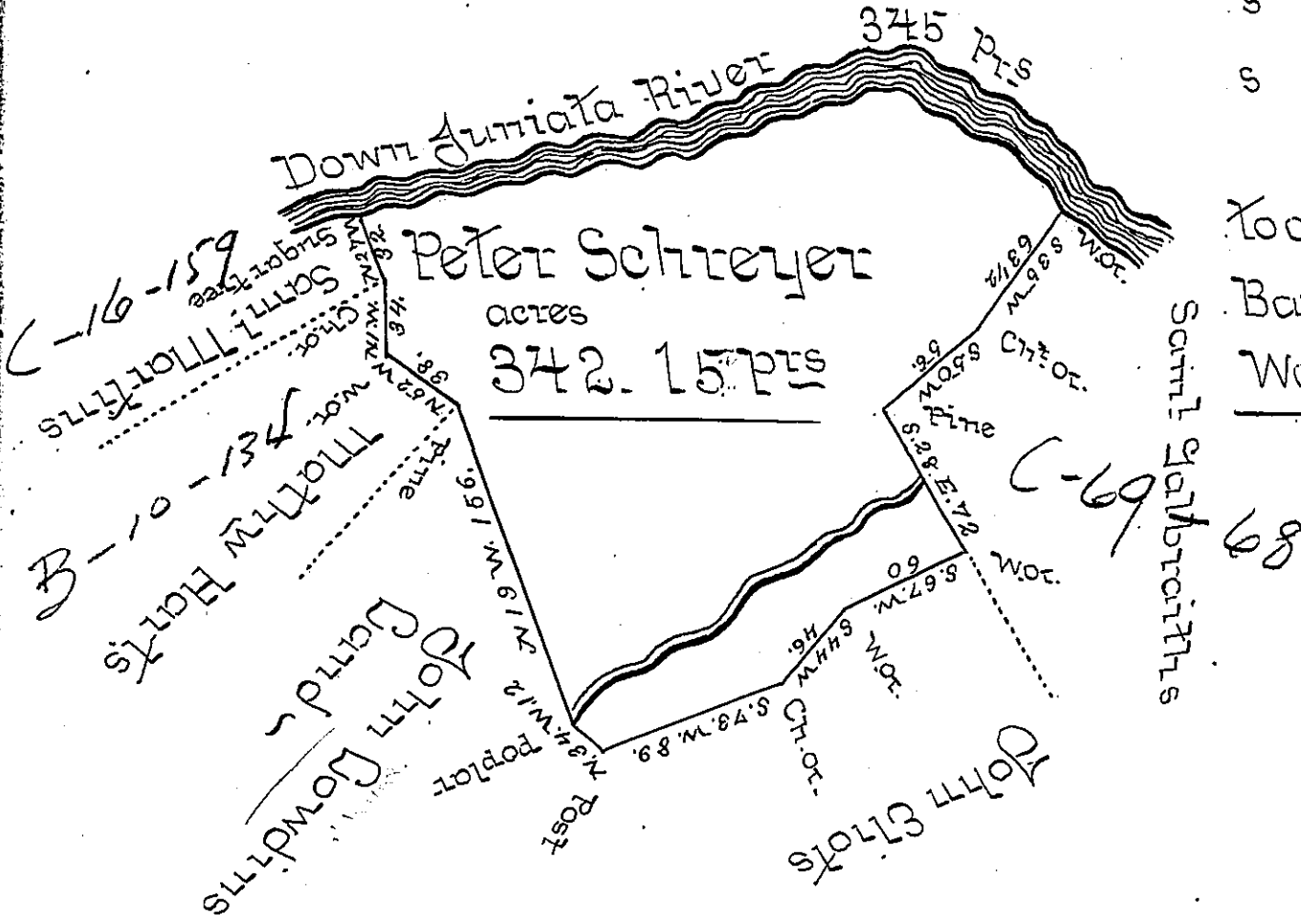
N 75 E — 222.

S 75 E — 59

S 50 E — 64.

345 p.

To a wot. on the
Bank near the
Warm Spring



A Draught of a Tract of Land situate in Rye Township Cumberland County containing Three Hundred and forty Two Acres. 15 perches and Allow^s of six p^t. Cent for Roads &c. Surveyd 21st of June 1794 in Pursuance of a Warrant granted to Peter Schreyer Dated 25th of Feb^r. 1785 ~

P Saml Lyon D.S.

To Daniel Brodhead Esq^r }
Surv^t Gen^l of Pennsylvania }

IN TESTIMONY that the above is a copy of the original remaining on file in the Department of Internal Affairs of Pennsylvania, made conformably to an Act of Assembly approved the 16th day of February, 1833, I have hereunto set my Hand and caused the Seal of said Department to be affixed at Harrisburg, this

second day of November 1897

James W. Fetter
Secretary of Internal Affairs.